

TRANMERE ROVERS

Football Club Ltd.



No 1963

FOOTBALL LEAGUE
DIVISION THREE

ROVERS

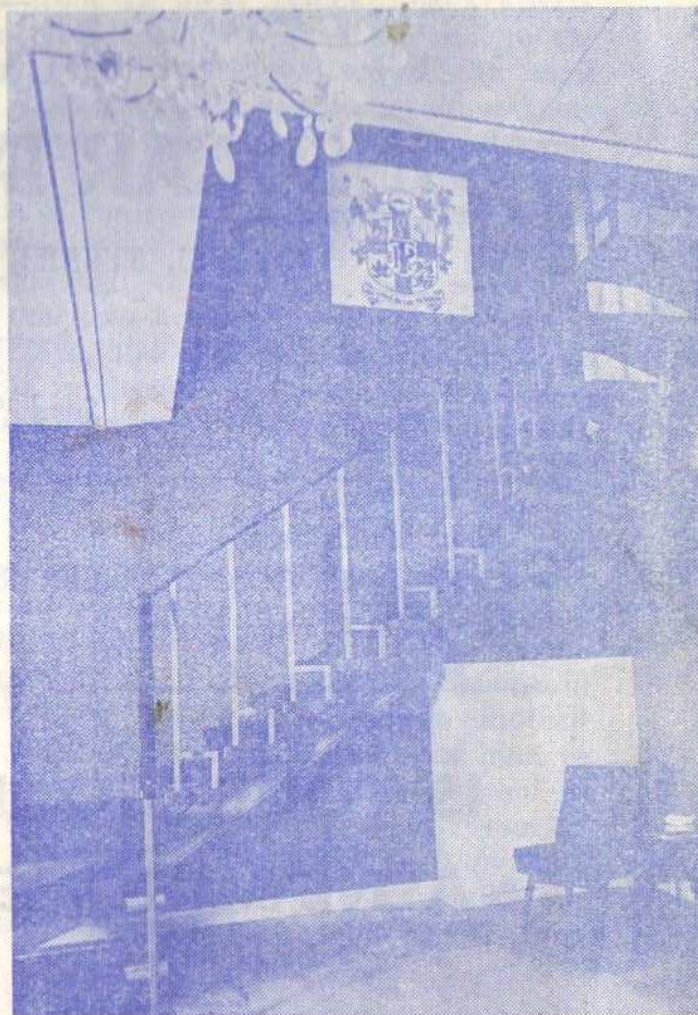
V

SWINDON

Prenton Park

FRIDAY, 24th JANUARY, 1969

Official Programme
incorporating
9 The Football League
Review



ENTRANCE HALL



COLD FEET?

NOT ANY MORE — SAYS JIMMY CUMBES

INSULAR INNER SOLES stop that one

— :: —

9/- WELL SPENT — FROM

INSULAR INNER SOLES

CHAPEL STREET :: DENBIGH

Send Shoe Size.

Next Match here—

WEDNESDAY, 29th JANUARY

TRANMERE ROVERS RESERVES v. ELLESMERE PORT TOWN

Cheshire County League.

Kick-off 7-30 p.m.

**IS YOUR 'GOAL'
A NEW HOME?**



Visit our Site Offices at —

YORK AVENUE — WEST KIRBY

DETACHED HOUSES AND BUNGALOWS FOR SALE FREEHOLD.

AND HOPE FARM — GREAT SUTTON

SEMI-DETACHED HOUSES WITH CENTRAL HEATING

SIR ROBERT LLOYD & COMPANY LTD.

PORT CAUSEWAY, BROMBOROUGH.

Telephone: BRO 2761

CLUB CALL



TRANMERE ROVERS A.F.C.

Prenton Park,
Birkenhead
Phone: MOU 3077

President:
F. C. LLOYD ESQ.

Director:
C. W. HODGSON ESQ.
J.P. (Chairman)

W. A. BOTHWELL ESQ.
(Vice-Chairman)

ALD. H. PLATT,
O.B.E., J.P.

R. G. ROWLANDS ESQ.
J.P.

H. B. THOMAS ESQ.
H. A. BAINBRIDGE ESQ.
F.C.A.

G. A. GOULD ESQ.
J.P., F.C.A.

Dr. J. R. BROWN

General Manager:
D. W. RUSSELL ESQ.

Secretary:
C. N. WILSON ESQ.

Hon. Medical Officer:
Dr. H. C. W. BAKER

Seventeen points from 14 home games, fourteen points from 12 away games. That's Rovers' remarkable record to date. And to add to the mystery of it all they have scored the same number of goals away as they have scored at home. How do you start out to explain that sort of form? Two theories have been advanced. The first is that sections of the crowd at Prenton Park are so bitterly critical that the players are afraid to make mistakes and this inhibits their play. The second is that away from home the opposition must come at us and this gives us the chance to play it tight in defence and score on the break-aways. That's how most teams play it when they come here-and it certainly seems to work for them.

But the first theory is worth examining since it could influence results in the remaining nine home games which are bound to be vital in the chase for promotion. If Birkenhead is serious in its declared desire for Second Division football now, as they say, is the time for all good men to come to the aid of the party. May we appeal to what a correspondent in the Birkenhead News on Wednesday described as 'the moaners' to give the lads the encouragement they need for an all out promotion bid. And what better time to start than tonight.

NOEL KELLY Sports Shop

22 ALLPORT LANE, BROMBOROUGH

FOR QUALITY SPORTSWEAR AND EQUIPMENT

H.P. Terms arranged for Clubs

TRANMERE ROVERS, EVERTON AND LIVERPOOL KITS

7-9 years — SMALL BOYS 27/11

9-11 years — BOYS 28/11

11-13 years — YOUTHS 29/11

Including Jersey, Best Quality Shorts and Stretch
Bri-lon Socks. Enclose P. O. or cheque. Delivery by
return.

Telephone BRO 2318

CLUB CALL (continued)

By any measuring stick, Swindon Town are the Third Division team of the year. They have brought very considerable honour to the Division by emulating Queens Park Rangers of two seasons ago and reaching the final of the League Cup. Let's hope they go on and win the trophy at Wembley, in March.

But its the League progress of the Wiltshiremen that concerns us most. With games in hand of all rivals, they are strong contenders for a place in the Second Division so success for Rovers tonight would have double value. That's why we want every Birkenhead voice to be heard in support of Rovers. Victory against such opposition would be a tremendous tonic to our players. It would give them the confidence at home that they always show away from home. And with confidence must come success. So let's be hearing you. But for heaven's sake, keep it clean.

FOR YOUR DIARY

Here are some re-arranged dates for Prenton Park (all Cheshire League matches) :

January 29th against Ellesmere Port Town.
February 5th against Guinness Export.

E. L. DARBYSHIRE, F.S.V.A.

Local Office:

BRADFORD AND BINGLEY BUILDING SOCIETY
COMPREHENSIVE PROPERTY SALES SERVICE
BIRKENHEAD, WIRRAL & LIVERPOOL DISTRICTS
VALUATIONS FOR ALL PURPOSES
PROPERTY MANAGEMENT
BUILDING SOCIETY MORTGAGES ARRANGED
PROPERTIES REQUIRED IN ALL DISTRICTS

E. L. DARBYSHIRE, F.S.V.A.
68 GRANGE ROAD WEST, BIRKENHEAD
Telephone: 652 1451/2

SUPPORT THE SUPPORTERS TOMBOLA
EVERY SATURDAY AT THE KINGSLAND

The Small Tombola with the Big Prizes.

Eyes down 8 p.m.

Visit the Tranmere Tom Shop at the Supporters Office.

Club Ties	15/-	Club Pennants	3/6
Club Lapel Badges	3/-	Club Pens	1/-
Club Blazer Badges	7/6	Club Diaries	2/6
Programmes of other Clubs	9d. to 1/-		
Lapel Badges of other Clubs	3/6		

Agents wanted for the Blue Pool and Daily Draw Tickets.

Call at the Office or fill in form below and we will do the rest.

Name

Address

Blue Pool.....

Daily Draw.....

R. E. WRIGHT & CO. LTD.



DISTRIBUTORS

Sales—
411-441 BOROUGH ROAD
BIRKENHEAD

Service—
790-794 BOROUGH ROAD,
BIRKENHEAD

Telephone 652 3581

Ellesmere Motors

(Little Sutton Car Sales) Ltd.

311 CHESTER ROAD,
LITTLE SUTTON,
WIRRAL, CHESHIRE

Tel. Hooton 3336 and 3107

BOWMANS of Bebington

CAR and VAN HIRE

ALMA STREET,
Near Bebington Stn. ROC 5581-5

1967 Ford range including new
Cortina and 17 cwt Transit Van

No mileage charge
ONLY £5 DEPOSIT

LEAGUE TABLES, 1968-69

FOOTBALL LEAGUE — DIVISION THREE

CHESHIRE COUNTY LEAGUE

	Home						Away						Pts
	P	W	D	L	F	A	W	D	L	F	A		
Watford	25	7	4	2	14	4	7	3	2	22	9	35	
Bournemouth	26	13	0	2	31	8	2	3	6	13	18	33	
Stockport	26	10	3	2	39	18	2	6	3	8	13	33	
Swindon	23	8	2	0	17	2	5	3	5	16	15	31	
Tranmere	26	8	1	5	20	15	6	2	4	20	20	31	
Torquay	26	9	1	2	23	7	3	4	7	13	20	29	
Plymouth	27	8	5	3	25	16	3	2	6	7	13	29	
Luton	24	10	1	0	30	7	2	3	8	7	16	28	
Reading	25	9	0	3	23	8	1	7	5	15	21	27	
Barrow	25	7	4	2	22	15	4	1	7	17	25	27	
Barnsley	26	7	4	2	20	11	2	4	7	12	25	26	
Nthmptn	26	5	5	4	19	19	4	3	5	10	11	26	
Roth'ham	26	6	3	3	15	10	2	5	7	12	18	24	
Southport	26	8	3	1	29	13	2	1	11	13	30	24	
Bristol R	23	7	3	2	23	15	2	3	8	16	27	24	
Walsall	25	5	5	1	19	7	2	4	8	9	19	23	
Mansfld	25	7	3	2	20	9	1	4	8	12	22	23	
Brighton	28	5	4	3	23	13	2	4	10	12	31	22	
Hartpls	26	5	4	3	15	20	3	2	7	8	23	22	
Orient	24	5	5	1	14	8	1	4	8	12	27	21	
Gillham	25	5	4	3	22	16	2	1	10	10	29	19	
Shrsbury	25	6	4	3	13	9	1	1	10	8	25	19	
Oldham	25	3	2	7	11	17	1	2	10	6	32	12	

	P	W	D	L	F	A	P
Stafford R	23	17	3	3	67	27	37
Skelmersdale	20	14	4	2	49	19	32
Guinness Ex	20	13	4	3	47	20	30
Mossley	21	14	2	5	57	29	30
Witton A.	23	11	6	6	43	32	28
Buxton	24	10	7	7	43	30	27
New Brighton	22	12	3	7	33	28	27
Stalybridge C	24	12	2	10	47	33	26
Winsford Utd	23	10	4	9	36	42	24
Tranmere R	23	9	5	9	37	28	23
Horwich RMI	21	1	8	6	35	39	22
Droylsden	24	9	4	11	43	58	22
Frickley C.	23	7	7	9	40	41	21
Ellesmere P T	24	8	5	11	34	37	21
Nantwich T.	24	8	5	11	41	33	21
Rhyl	20	7	4	9	34	34	18
Oswestry T.	22	6	4	12	35	53	16
Chester	25	5	2	18	28	70	12
Sandbach R.	23	3	3	17	31	64	9
Ashton U.	25	2	4	19	26	67	8

The ball for tonight's match has been donated by
Messrs. PERRIN, HUGHES & CO. LTD., (Merchants to Builders and Allied
Trades)

ROLL CALL, 1968-69

	FIRST TEAM		Goals		SECOND TEAM		Goals	
	Appearances		L	Cup	Appearances		L	Cup
CUMBES	26	7			ROBERTS	20		
ROBERTSON	23	5			DONNELLY	21		
MATHIAS	17	6			DEMPSEY	19		
KING, A.	24	5	1		JOHNSON	23		
STORTON, S.	10	3			STORTON, T.	16		
POINTON	7	4			FLEMING	21	3	
SMITH	21	7	3		KENNEDY	18	2	
CASEY	24	5	3	1	ELLIS	18	6	
BEAMISH	17	6	5	1	BEAMISH	3	5	
ROWLAND	10	3			EVANS	10	1	
SINCLAIR	17	6	5	1	McNAMEE	8	2	
YARDLEY	18	10	11	4	ROBERTSON	1	1	
HUDSON	19	3	6		THOMAS	4		
GILL	6	3			POINTON	12		
PRITCHARD	10	2			STORTON, S.	10		
McNAMEE	14	2	3		HUDSON	3		
STORTON, T.	16	2			ROWLAND	7	3	
SCOTT	6		1	1	GILL	16	5	
Subs: STORTON 6, SINCLAIR 4, ROWLAND 1.					LANE	4		
					HUXLEY	3		
					SINCLAIR	4	2	
					PRITCHARD	4		
					KING	1		
					MATHIAS	6		
					SCOTT	3		
					MANNING	11	4	
					SMITH	3		

ANNUAL SALE NOW ON

save up to 5/- in the £

on our hand tailored suits and overcoats

says Mr. HYMAN JACOBS

I'm offering you exceptional reductions—up to 5s. in the £—to keep my highly skilled craftsmen fully occupied during the traditional quiet season. My entire stock of over 12,000 new season's materials, one of Britain's biggest selections, is yours to choose from at these special prices. Here's your chance of a Hyman Jacobs' garment at a lower than ever price. Order now while sale continues and save yourself pounds. Our range of materials includes:— Irish Thornproofs, Scotch Cheviots, Harris Tweed, Crombie Overcoatings, West of England, Terylene and Acrilan, Lightweight Worsted Suitings for finer days, including Mohairs.

Fashionable range of Ladies' Materials.



**Hyman
Jacobs**

*This signature on a coat label is my
personal guarantee of hand craftsmanship*

249 GRANGE ROAD (CHARING CROSS BIRKENHEAD. Telephone BIRKENHEAD 8696

For the man in a hurry — 48 hour MADE TO MEASURE Service

BENTS BITTER



Still Supreme

EASTHAM TIMBER CO. LTD.

SCHOOL LANE
VILLAGE ROAD
HR. BEBINGTON

STOCKISTS OF
DOORS, WINDOWS
JOINERY

GET YOUR CLOTHES AT

Bradleys



619/171 GRANGE ROAD,
BIRKENHEAD
Telephone BIR 8701

Tranmere Rovers

White Shirts, Blue edgings
White Shorts

1. Jimmy CUMBES
2. Stan STORTON
3. Frank GILL
4. Alan KING
5. Derek SMITH
6. Gerry CASEY
7. John McNAMEE
8. George SCOTT
9. George HUDSON
10. Joe PRICHARD
11. Roy SINCLAIR

Sub: ROWLANDS

Referee—

A. A.
(Sh)



Linesmen—

R. P.
(Red)

C. M.
(Yellow)

Fort Fencing

High Quality Fencing &
Garden Pavings
of all types
supplied & fitted.

BIR.8440

ESTIMATES FREE!

Dacre St. (behind Empire Cinema)



T.V.
Radio



TOP VALUE

W. H. TRACK

176-182 Conway Street, Birken

GIRLING LTD., BROMBOROUGH

MAKERS OF THE BEST BRAKES IN THE WORLD

* * *

We have varied and interesting vacancies for both skilled and semi-skilled men with an engineering background

* * *

WHY NOT COME FOR AN INTERVIEW?

Swindon Town

1. P. DOWNSBOROUGH
2. Owen DAWSON
3. Rod THOMAS
4. Joe BUTLER
5. Frank BURROWS
6. Stan HARLAND
7. Don HEATH
8. Peter NOBLE
9. Roger SMART *SMART JONES*
10. Willie PENMAN *NOBLE*
11. Don ROGERS

Sub:

KICK OFF

WITH

A

BULLS EYE BROWN

BY

Greenall Whitley

Green
(field)



Parker
(flag)

Smith
(flag)

CES Electrical Appliances

FINEST SERVICE

E & SON LTD,

Head. Phone BIR 6115 & 8 branches

HUGHES & JONES

Leslie M. Hughes, F.A.I.
Tom Chitham, F.A.L.P.A.

Local Agents for the Provincial Bldg. Soc.
Properties sold by Private Treaty or
Auction. Estates large & small carefully
managed. Valuations for Mortgage Probate
etc. Excess Repair, Maintenance,
Claims Prepared

All Classes of Insurance effected
Compensation Claims Negotiated
Mortgages Arranged

Estate Agents, Valuers, Property Auctioners
19 HAMILTON SQUARE, BIRKENHEAD
Telephone Birkenhead 6651 — 3 lines

THIS IS THE TIME TO MAKE A STAND!

INSIST ON

'STORETON'

FOR YOUR NEW CAR

AUSTIN · MORRIS & WOLSELEY

plus Used Cars of the highest standard

AFTER-SALES SERVICE BY FULLY TRAINED STAFF

TEEHY LANE, BEBINGTON · Tel: MOUNTWOOD 2242

T. FOGG

78 BENTINCK STREET,
BIRKENHEAD

*for all Glazing Contracting
Mirrors, Continental Glass*

Tel. BIR 7818

LLOYDSIGNS

58 HAMILTON ST.,
BIRKENHEAD

for
ILLUMINATED SIGNS
LETTERS
SIGNWRITING
ENGRAVING and
POSTERS

Tel. 647 8019

H. KILFOYLE

SCRAP METAL DEALER

off LARCH ROAD
BIRKENHEAD, CHESHIRE
Tel. CLA 2622 (9 — 5-30)

*Buyer of ferrous and non ferrous
Metals*

WE COLLECT

SPOT CASH

LOW MILAGE CLEAN CARS

M. L. MOTORS

365/373 NEW CHESTER ROAD
BIRKENHEAD

Telephone ROC 4545

A. E. LAMDIN Ltd.

(formerly Mertons of Birkenhead)

for BOOKS STATIONERY
and TOYS

Educational Book Suppliers

29 OXTON ROAD,
TELEPHONE CLA 5842

The Top Twenty Catering Co. Ltd,

579 BOROUGH ROAD

Weddings - Dances - etc.
Catering Contractors
Cafe Premises open all day

Cloughton 1689 - Mountwood 4213

Licensed Bars Arranged

OUR VISITORS

PETER DOWNSBOROUGH (goalkeeper)

Born Halifax. Signed in August 1965 from Halifax Town where he was a product of local football. A fearless agile player who has done much to strengthen Town's defence. Height 5ft. 10½ins. Weight 13st. 2lbs.

OWEN DAWSON (right back)

Born Hattfield. Joined the club from Portsmouth in June 1962. He was a regular first team player until he was unlucky to lose his place through injury. A fast, tenacious player. He was a former Youth International. Height 5ft. 9½ins. Weight 11st. 12lbs.

ROD THOMAS (full back)

Born Glyncoirwg. A former youth player with the Club. He was signed from Gloucester City in July 1964. Took over the full back position last season when Owen Dawson was injured. Has gained Welsh Under 23 Caps and Full Welsh Caps. Height 6ft. Weight 12st. 10lbs.

JOE BUTLER (full back)

Born Newcastle. Joined Swindon from Newcastle United in August 1965 where he graduated to the senior ranks through the Club's junior team. A tenacious player whose speed and ability make up for his lack of inches. Height 5ft. 7½ins. Weight 11st.

ROGER SMART (right half or inside forward)

Born Swindon. Another local player who joined the Club direct from Swindon Schoolboys team. At 17 he was appearing regularly at centre forward in the Reserve Team, but he excels as a deep lying inside forward. A versatile player who is able to play at wing half. Height 5ft. 11½. Weight 12st. 11lbs.

FRANK BURROWS (centre half)

Born Larkhall, Scotland. Joined the Club from Scunthorpe United for whom he played 3 seasons. Formerly with Raith Rovers. A strong defender who has made his mark in Third Division football. Height 6ft. 1ins. Weight 12st. 8lbs.

STAN HARLAND (left half)

Born Liverpool. Was signed from Carlisle United in July 1966. Formerly with Everton and Bradford City. He has been a regular choice at left half since making his debut at the beginning of the 1966-67 season. A forceful player who likes to go forward to back up the forwards in attack. Height 6ft. Weight 12st. 5lbs.

DON ROGERS (outside left)

Born Paulton. Probably the most sought after player in the team. He was signed by Swindon when only 15 and quickly came to the fore. Gained many England Youth International Caps and subsequently played in the England Under 23 International Team. Was the club's top goal scorer last season with 28 goals. Height 5ft. 10½ins. Weight 12st. 10lbs.

DON HEATH (outside right)

Born Stockton. Signed from Norwich in September 1967. Formerly with Middlesbrough where he served as an apprentice professional. A hard working winger who is also able to play in the inside forward position. Height 5ft. 8ins. Weight 11st. 8lb.

CHRIS JONES (centre forward)

Born Aittrincham. A close season signing from Manchester City for which club he played in their touring team in America. Height 5ft. 11ins. Weight 11st. 12lbs.

WILLIE PENMAN (inside forward)

Born Wemyss, Fife. Signed from Newcastle United in September 1966 for a considerable fee. Formerly with Glasgow Rangers. A clever ball playing inside forward who has also appeared at centre forward with the club. Height 5ft. 8ins. Weight 10st. 10lbs.

PETER NOBLE (inside forward)

Born Sunderland. Joined the Club from Newcastle in January 1968 for whom he played for four years. Prefers to play an attacking role. Height 5ft. 8ins. Weight 10st. 10lbs.

FOLLOW THE TEAM IN COMFORT

HARDINGS

SPECIAL EXCURSIONS FOR AWAY MATCHES

Saturday 1st February.

Q.P.R. v EVERTON

Depart Friday, 11 p.m. 37/9 return,

Saturday, February 7th.

STOCKPORT v. TRANMERE

Depart 5 p.m. 9/- return.

Telephone BIR 7831

Tropical Fish

(WIRRAL) LTD.

16 WHITBY ROAD,
ELLESMERE PORT

Tel. ELLESMERE PORT 4327

TROPICAL FISH - PLANTS
AQUARIUMS - FOODS
EQUIPMENT ETC.

INSURANCE WORK



S. CARR

AUTO BODY REPAIRS

Panel Beating, Welding,
Respraying

138 BRIDGE STREET,
BIRKENHEAD

Tel. 051 - 647 78552

George Hedderick

EASTHAM AUTOSPRAYS

COACH PAINTERS

PANEL BEATERS

CELLULOSE SPRAYERS

**HARRISON'S YARD,
OFF HEYGARTH ROAD**

Tele: EAS 1987

LIKE THE ROVERS

BE ON THE BALL

Kick off with a Crypton Tuned car

Score now — Tel. 327 1879

for

D O N M A R T I N

to expertly Crypton Tune your car
at your convenience

Get on easy terms with heights

SKY HOOKS

WIRRAL SCAFFOLDING

FOR HIRE — BOOK NOW

over the level crossing at
Hoylake Station
access with safety

HOY 5234 - delivered

HEWCRAFT

Glass Fibre Moulding Specialists
AND BOAT SPECIALISTS

Carr Lane Industrial Estate,

Hoylake, Wirral, Cheshire

E. BLACK

& SON LTD.

FOR CONTEMPORARY AND
MODERN FURNITURE

Quill Venetian Blinds

Fitted Carpets Estimates Free

24-26 ARGYLE STREET,
BIRKENHEAD

Tel. BIR 9126 Terms arranged

SUPPORT YOUR LOCAL TEAMS

TRANMERE ROVERS F.C.

VAUXHALL MOTORS E.P.

and

GARLICK, BURRELL

AND EDWARDS

6 Woodchurch Road Birkenhead

Your Vauxhall-Bedford main dealer

D. W. SHAW

*Specialist in Felt Roofing
and Decorative Flooring*

6 VICTORIA MOUNT
OXTON, BIRKENHEAD

Telephone CLA 1379

J. O'GRADY

DO IT YOURSELF CENTRE

537-559 NEW CHESTER RD.

ROCK FERRY

Tel: ROCK 5731

Everything for the Do it yourself
enthusiast

ODDS & ENDS . .

Rovers must have set up a record of sorts this week by having three matches postponed on successive nights. The Cheshire Senior Cup second replay against Runcorn goes on at Runcorn on Monday night (7-30 p.m.) but no new dates have been found for the League match at Walsall, or the Cheshire League match here against Stalybridge Celtic.

— : o : —

In addition to the Runcorn re-play, the Reserves are slated to meet Ellesmere Port Town here next Wednesday while on Friday night League leaders Watford, will be our guests. What a night it will be if the Third Division side triumph over mighty Manchester United in the Cup tomorrow.

— : o : —

Congratulations . . . to Roy Lorensen, our second team coach, who has been awarded his F.A. Coaching certificate . . . and to Alan King, who has just celebrated his 24th birthday.

For Reliable Plant
Consult the Experts

J. WILKINSON

(PLANT HIRE)

52/53 POOL STREET,
BIRKENHEAD

**Bulk Excavations
Demolition Contractors
Building Contractors
Road Hauliers**

Tel. 051 - 647 6090 & 7470

Greenline Cars (Wirral) Ltd.

18 Chester St., Birkenhead

Radio Cnntrolled

DAY — TAXIS — NIGHT

BIR 6868

Weddings - 14 seater mini bus
service — Contract work

ROBERT SMITH AND SONS LTD.

STEEL STOCK HOLDERS
SPECIALISING IN STEEL PLATES TO
GUARANTEED QUALITIES CUT
TO SIZE

17-21 CATHCART STREET,
BIRKENHEAD

Tel. BIR 8025 (2 lines)

Commercial Vehicle Repairs
Diesel and Braking Specialists

LEASOWE Lifting Services

(Partners B. and R. Horner)

167 LEASOWE ROAD,
WALLASEY, L45 8PA

LORRY MOUNTED CRANES FOR HIRE
COMPLETE OVERHAULS

Tel. 051 - 638 1670
051 - 638 1732

A T T E N D A N C E S

Home

Liverpool (Friendly)	13,837
Gillingham	6,900
Chester (F.L. Cup)	11,478
Southport	8,018
Chester (F.L. Cup)	13,627
Barnsley	7,756
Torquay United	7,448
Barrow	5,018
Orient	6,420
Reading	7,136
Brighton	6,482
Walsall	6,879
Shrewsbury Town	7,570
Southport (F.A. Cup)	8,515
Stockport County	8,000
Crewe (Ches. Prem. Cup)	1,452
Northampton	4,502
Crewe Alexandra	6,600
Bristol Rovers	5,400

Away

Chester (F.L. Cup)	8,100
Rotherham	10,800
Mansfield Town	8,300
Chester (F.L. Cup)	13,200
Everton (F.L. Cup)	34,700
Orient	8,800
Luton Town	13,200
Oldham Athletic	4,200
Crewe Alexandra	5,600
Northampton	7,500
Bristol Rovers	6,250
Reading	3,673
Hartlepool's United	4,355
Reading	4,600
Bournemouth	8,500
Shrewsbury Town	5,600

REPAIRS AND SERVICE

ENGINE OVERHAULS

Lingdale Motors

21 STATION ROAD,
(opp. Birkenhead North Station)

Tel. CLA 5471
051 - 652 5471

CAR SALES

ENGINE TUNING SPECIALISTS

D. C. G TYRES

Stockist for Metzeler Tyres
Unconditionally guaranteed for
Twelve months
(against impact fractures etc.)

BRECK ROAD, WALLASEY

Tel. WAL 3964

Generous Discounts

FOOTBALL LEAGUE			F	A	CHESHIRE LEAGUE			F	A
Aug.	10—GILLINGHAM	Home	2—0	Aug.	10—Oswestry Town	Away	5—0		
	14—Chester (League Cup)	Away	0—0		14—Rhyl	Away	0—0		
	17—Rotherham	Away	1—4		17—MOSSLEY	Home	4—0		
	21—CHESTER (LC replay)	Home	2—2		24—Frickley Colliery	Away	3—1		
	23—SOUTHPORT	Home	1—0		31—Buxton (Chall. Cup)	Away	1—2		
	26—CHESTER (L Cup)	Home	1—1	Sept.	4—Skelmersdale United	Away	2—0		
	28—Chester (L Cup) ...	Away	2—1		7—Nantwich	Away	2—1		
	31—Mansfield Town	Away	1—1		9—RHYL	Home	1—1		
Sept.	3—Everton (League Cup)	Away	0—4		14—DROYLSDEN	Home	4—0		
	6—BARNSELY	Home	3—1		16—NANTWICH	Home	0—2		
	9—Orient	Away	0—0		28—WINSFORD	Home	2—1		
	14—Luton Town	Away	1—3	Oct.	4—CHESTER	Home	0—2		
	16—TORQUAY UNITED	Home	0—1		12—Witton Albion	Away	0—4		
	20—BARROW	Home	0—3		26—Sandbach	Away	3—1		
	28—Oldham Athletic	Away	2—1	Nov.	9—Chester	Away	3—0		
Oct.	5—Crewe Alexandra	Away	3—2		16—Buxton	Away	1—1		
	7—ORIENT	Home	3—0		23—Mossley	Away	1—3		
	11—READING	Home	2—1		30—OSWESTRY TOWN	Home	4—2		
	14—BRIGHTON	Home	0—2	Dec.	7—Stalybridge	Away	0—1		
	19—Northampton	Away	1—2		14—HORWICH	Home	1—1		
	25—WALSALL	Home	2—1		21—Ashton United	Away	0—0		
Nov.	2—Bristol Rovers	Away	2—0	1959					
	8—SHREWSBURY	Home	3—1	Jan.	4—BUXTON	Home	4—0		
	16—SOUTHPORT (FA Cup)	Home	0—1		11—RUNCORN (Senior Cup)	Home	2—2		
	22—STOCKPORT COUNTY	Home	1—1		15—Runcorn (re-play)	Away	0—0		
	25—Crewe (Ches. P. Cup)	Home	3—0		25—Droylsden	Away			
	29—Hartlepoons United	Away	4—2	Feb.	1—Stafford Rangers	Away			
Dec.	14—Reading	Away	0—2		8—NANTWICH	Home			
	20—NORTHAMPTON	Home	2—1		15—Cheshire Senior Cup				
	26—CREWE ALEX.	Home	0—1	Mar.	22—FRICKLEY COLLIERY	Home			
Jan.	4—Bournemouth	Away	4—3		1—WITTON ALBION	Home			
	10—BRISTOL ROVERS	Home	1—2		8—Winsford United	Away			
	18—Shrewsbury Town	Away	1—0		15—STAFFORD RANGERS	Home			
	24—SWINDON TOWN	Home			22—Horwich	Away			
	31—WATFORD	Home			29—SANDBACH R.	Home			
Feb.	7—Stockport County	Away		Apr.	4—New Brighton	Away			
	14—HARTLEPOOLS UTD.	Home			5—				
	22—Plymouth Argyle	Away			7—NEW BRIGHTON	Home			
Mar.	1—Gillingham	Away			12—ASHTON UNITED	Home			
	3—BOURNEMOUTH	Home			19—Elesmere Port	Away			
	7—ROTHERHAM UTD.	Home		May	3—				
	11—Watford	Away			10—				
	14—Southport	Away							
	17—PLYMOUTH A	Home							
	21—MANSFIELD TOWN	Home							
	29—Barnsley	Away							
Apr.	5—OLDHAM ATH.	Home							
	7—Torquay United	Away							
	12—Barrow	Away							
	16—Brighton	Away							
	18—LUTON TOWN	Home							

These Fixtures are the copyright of the Football League Limited and are printed by their permission under Licence No. 2. They must not be reproduced in whole or in part without permission from the Football League Ltd.

ROBERTS ° JOBSON LIMITED

THE SPORTS SHOP
CHARING CROSS

Specialists in Sports Goods
since 1919

Suppliers to
TRANMERE ROVERS F.C.

Telephone BIR 8778

CONSULT

STEPHENS

THE FUNERAL DIRECTORS

of
BIRKENHEAD
and
BEBINGTON

Save

at the



*the more you spend
the more the dividend!*

BIRKENHEAD & DISTRICT CO-OPERATIVE SOCIETY LTD.

Printed by E. Shaw & Co. Ltd. (T.U.) 1 Church Road, Wallasey.